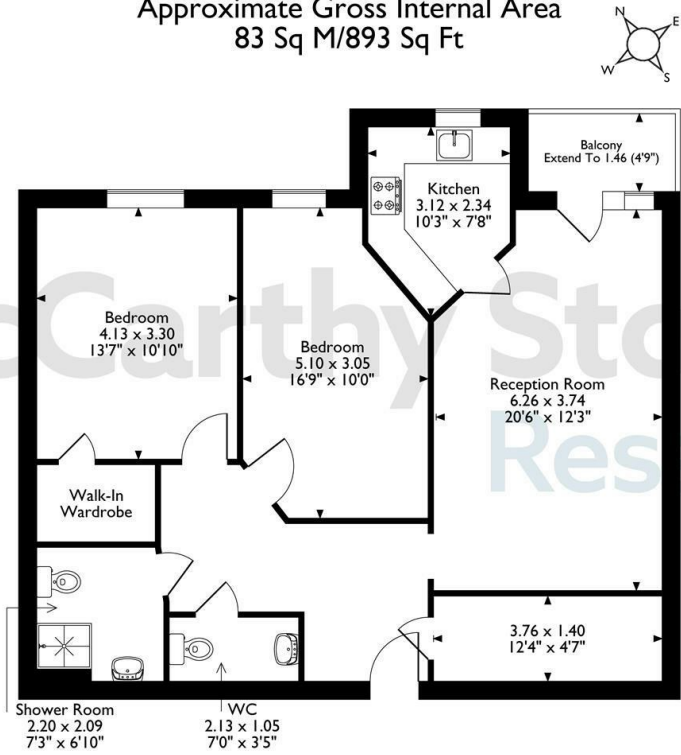
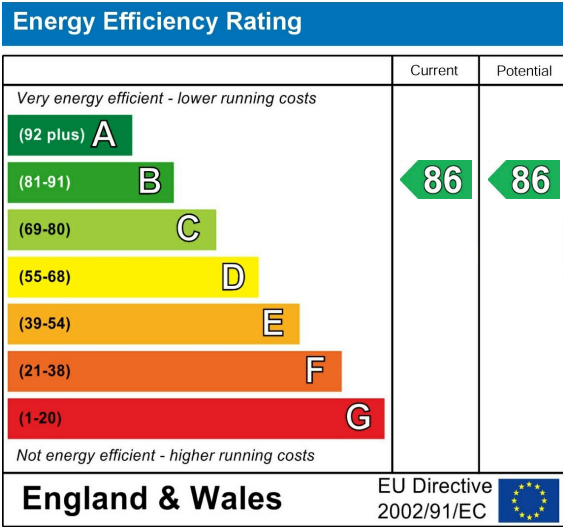
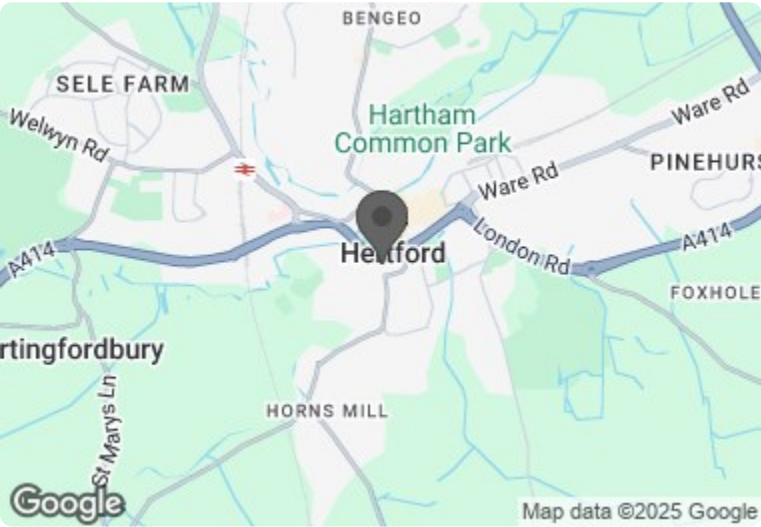


23 Edward House, Pegs Lane, Hertford, Hertfordshire
Approximate Gross Internal Area
83 Sq M/893 Sq Ft



The position & size of doors, windows, appliances and other features are approximate only.
© ehous. Unauthorised reproduction prohibited. Drawing ref. dig/8661016/DST.

Council Tax Band: D



This floor plan is not drawn to scale and is for illustrative purposes only. Any measurements, floor areas (including any total floor area), openings and orientation are approximate and for guidance only. McCarthy Stone Resales do not take liability for any error, omission or misstatement. All parties must rely on their own inspections. It should not be assumed that any furniture or fittings contained in the photographs are included in any sale. All details referring to time and distances to localities are approximate. Details regarding any common charges and other applicable fees are provided by the seller and should not be relied on without verification and further checks made through a solicitor/conveyancer. Please contact the Property Consultant for further information that Appliances (including central heating) have not been tested, therefore it cannot be assumed that they are in good working order. All interested parties are advised to check availability and make an appointment before travelling to view the property to avoid disappointment or wasted time or travel expenses. The details contained within this brochure are for information purposes only and do not form part of any agreement. All purchases will be subject to contract terms. © All artwork (photos and floorplans) and written content are the sole property and copyright of McCarthy & Stone Resales Limited and are legally protected by UK & International copyright laws. Under no circumstance may you download, reproduce, publish or distribute any content for commercial purposes, without prior written permission from McCarthy Stone Resales. Unauthorised duplication or usage for commercial purposes is prohibited by the Copyright law and will be prosecuted.



McCarthy & Stone Resales Limited, Trading as McCarthy Stone Resales • T: 0345 556 4104 • W: mccarthyandstoneresales.co.uk
Registered Office: 100 Holdenhurst Road, Bournemouth, Dorset, BH8 8AQ. Registered in England and Wales No. 10716544

23 Edward House

Pegs Lane, Hertford, SG13 8FQ

PRICE
REDUCED



PRICE REDUCTION

Asking price £470,000 Leasehold

A spacious two bedroom first floor apartment with a sheltered WALK OUT BALCONY. Edward House is a popular McCarthy Stone retirement living plus development with 24/7 staffing, domestic assistance and an onsite restaurant.

Entitlements Advice and Part Exchange available - speak to your Property Consultant for more information

Call us on 0345 556 4104 to find out more.

resales@mccarthyandstone.co.uk | mccarthyandstoneresales.co.uk

Edward House, Peggs Lane, Gascoyne Way,

2 Bed | £470,000

Edward House

Edward House features purpose built apartments, exclusively for those over 70. The apartments feature a modern bedroom, kitchen and living room, as well as fire detection equipment, an intruder alarm and a camera entry system that can be used with a standard TV.

The complex also has an on-site car park, landscaped gardens, bistro restaurant, guest suite for overnight visitors and a communal lounge with Wi-Fi and patio area. There is also a lift access to all floors and a mobility scooter charging room.

Retirement Living PLUS - Luxurious and low maintenance private apartments in great locations, exclusive to the over the 70's. Benefit from an onsite restaurant or bistro, plus the option of bespoke domestic and personal care packages

Hertford is considered one of the best places to live in the UK and the McCarthy Stone Retirement Living PLUS development boasts an enviable position right in front of the Hertford Castle. You'll also be within walking distance to everything Hertford has to offer, including a variety of shops, restaurants and pubs in the town centre, just moments away.

Development Highlights

- ~ Local amenities are close to the development
- ~ Bright and airy Wellness Suite coming soon
- ~ Spacious communal lounge
- ~ Fantastic bistro style restaurant serving hot food and snacks
- ~ Beautiful sunny landscaped gardens with communal patio
- ~ Friendly qualified team on site 24/7, 365 days a year

Entrance Hall

Front door with spy hole leads to the large entrance hall - the 24-hour Tunstall emergency response pull cord system is situated in the hall. From the hallway there is a door to a generously sized storage/airing cupboard with shelving. Illuminated light switches, smoke detector, apartment security door entry system with intercom are located in the hall. Doors lead to the lounge, bedrooms, wet room and WC.

Lounge

A spacious lounge with large window which allows lots of natural light in and incorporates a French door leading to a sheltered walk out balcony with outlook toward the front elevation. The room provides ample space for dining. Two ceiling light points, TV point with Sky+ connectivity (subscription fees may apply), telephone point and a range of raised power sockets. Glazed wooden door opening to separate kitchen.

Kitchen

Modern kitchen with a range of base and wall units finished in a white high gloss and roll edge work surfaces with matching splash back. The stainless steel sink unit with drainer, is positioned below the front facing window. Built in waist height electric oven with microwave above and four ring hob with extractor hood. Integrated fridge and freezer. Under unit and ceiling lighting. Tiled floor.

Master Bedroom

A generously sized bedroom with a full length window providing front facing outlook. The room has the benefit of a door leading to a walk in wardrobe with shelving and hanging rails. Ceiling light point, TV and telephone point and a range of raised power sockets. Emergency pull-cord.

Bedroom Two

Double second bedroom which could also be used for dining, or a hobby / study room and also offers an airy full length window. Ceiling light point and a range of raised power sockets. Emergency pull-cord.

Wet Room

Fully fitted modern wet room style with electric shower, grab rail and curtain. Low level WC, vanity unit with wash basin with cupboards beneath and fitted illuminated mirror. Part tiling to walls, wall mounted chrome towel radiator, ventilation system, shaving point and down lighting. Slip resistant flooring. Emergency pull cord.

WC

Situated off the hallway and perfect for guests, low level WC, vanity unit with wash basin with cupboards beneath.

Lease Information

Lease: 999 years from 1st Jan 2018
Ground rent: £510 per annum
Ground rent review: 1st Jan 2033

Service Charge (breakdown)

What your service charge pays for:

- Estate Manager who ensures the development runs smoothly
- CQC Registered care staff on-site 24/7 for your peace of mind
- 1 hour cleaning / domestic assistance per week, per apartment
- 24hr emergency call system
- Monitored fire alarms and door camera entry security systems

- Maintaining lifts
- Heating and lighting in communal areas
- The running costs of the onsite restaurant
- Cleaning of communal areas daily
- Cleaning of windows
- Maintenance of the landscaped gardens and grounds
- Repairs & maintenance to the interior communal areas
- Contingency fund including internal and external redecoration of communal areas
- Buildings insurance, water and sewerage rates

Annual Service charge: £13,886.88 for financial year ending 30/06/2026.
Check out benefits you may be entitled to.

Moving Made Easy & Additional Information

Moving is a huge step, but don't let that hold you back. We have a range of services to help your move go smoothly, including:

- FREE Entitlements Advice to help you find out what benefits you may be entitled to
- Part Exchange service to help you move without the hassle of having to sell your own home.
- Removal Services that can help you declutter and move you in to your new home.
- Conveyancing specialists who are experienced with sales and purchases of McCarthy Stone retirement properties.

For more information speak with our Property Consultant today.

- Full Fibre Broadband
- Mains water and electricity
- Electric room heating
- Mains drainage

PRICE
REDUCED

